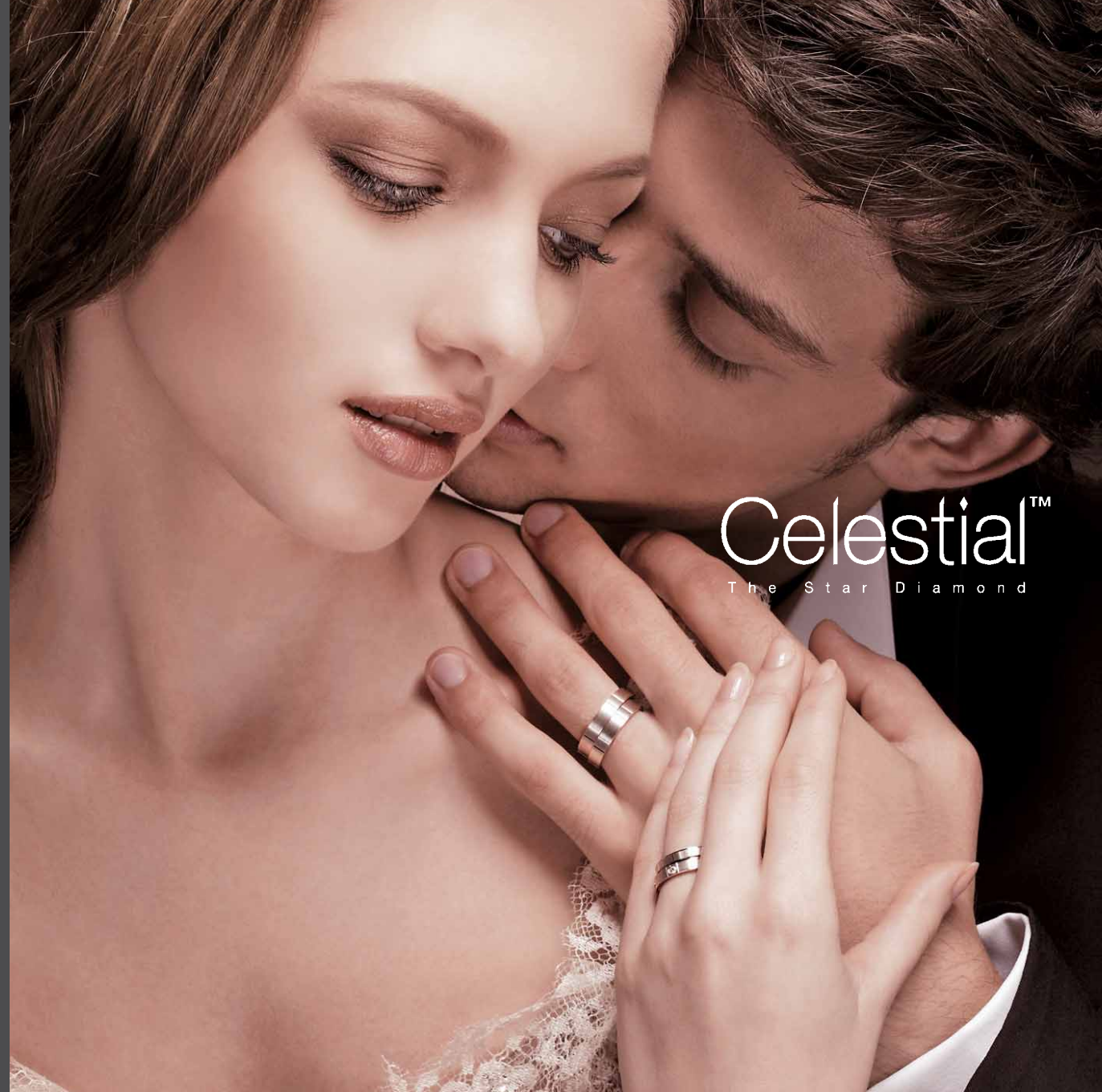


GOLDHEART



Celestial™
The Star Diamond



Eternal love looks...

Forever dazzling. Eternally beautiful.
Just like Celestial The Star Diamond.

Symbolising your love, the world's first
diamond with 73 facets lets it shine with
a gorgeous starburst light.

Eternal love does look and feel this good.



Celestial™

Starburst brilliance for your eternal love

The Star Diamond

Just as understanding your partner is the first step to a better relationship, understanding your diamond (and the four Cs) is the first step to knowing why Celestial is a brilliant buy.

CUT

A good cut decides a diamond's brilliance because it allows light to reflect in the best possible way. In a well-cut diamond, light "jumps" from one facet to another until it bursts through the top of the diamond as shine.

With Celestial, also known as The Star Diamond, shine positively scintillates and is guaranteed – thanks to its distinctive 73-facet cut. The world's first such cut, each facet is so perfect that when viewed through a scope, its brilliance is a stunning, eight-pronged starburst pattern from the top, and a breathtaking fireworks explosion when seen from the bottom.



Top view of Celestial's amazing 73-facet cut where shine is a brilliant starburst



Bottom view of Celestial

A brilliance never seen before.
A brilliance that shines above other diamonds.
The brilliance of millions of stars.
Forever dazzling. Eternally beautiful.

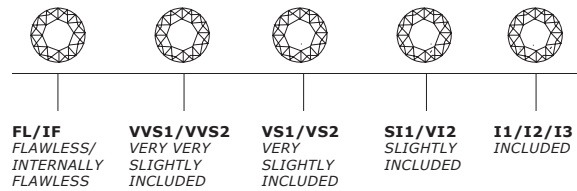
COLOUR

Most diamonds contain subtle shades of yellow or brown, so when a diamond has less colour, it's considered "whiter", and hence, is of better quality. Colour is ranked from D to Z.

D E F	G H I J K L M	N O P Q R	S T U V W X Y Z
COLOUR LESS	NEAR COLOUR LESS	FAINT YELLOW	VERY SLIGHT YELLOW

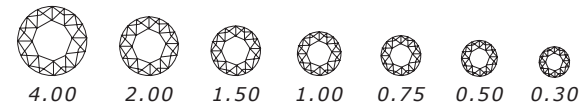
CLARITY

Nearly all diamonds have inclusions or tiny internal characteristics. These, depending on size, location and amount, decide a diamond's value. Inclusion scale range between Flawless and Included, with the former rated as the best.



CARAT

A diamond's weight (also its size) is measured in carats with one carat equal to 100 points. Carat weight, however, doesn't always decide a diamond's value. Colour, clarity and cut still play an important part.



Love is ...

CELESTIAL SOLITAIRE DIAMOND RINGS, 6138DA (TOP CENTRE), 6143DA (2ND ROW) AND 6008DA (BOTTOM RIGHT).



...the significant other

CELESTIAL DIAMOND PENDANTS, 5159DD.



...The power of three –

CELESTIAL TRILOGY DIAMOND PENDANTS, 5274DD.



Past
Present
Future

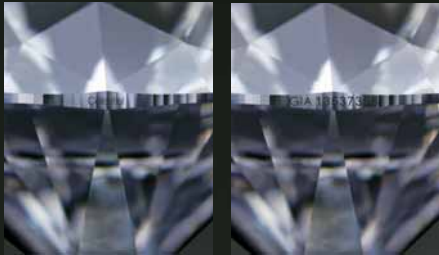
CELESTIAL TRILOGY DIAMOND RINGS, 4021DA (EXTREME TOP) AND 6041DA (CENTRE AND BOTTOM).

THE CELESTIAL PROMISE

All Celestial diamonds are certified by the Gemmological Institute of America (GIA), one of the best guarantees in the world, and you won't find two Celestial diamonds alike.

Each has its own characteristics, hence, the laser-inscribed Celestial trademark and an identification number.

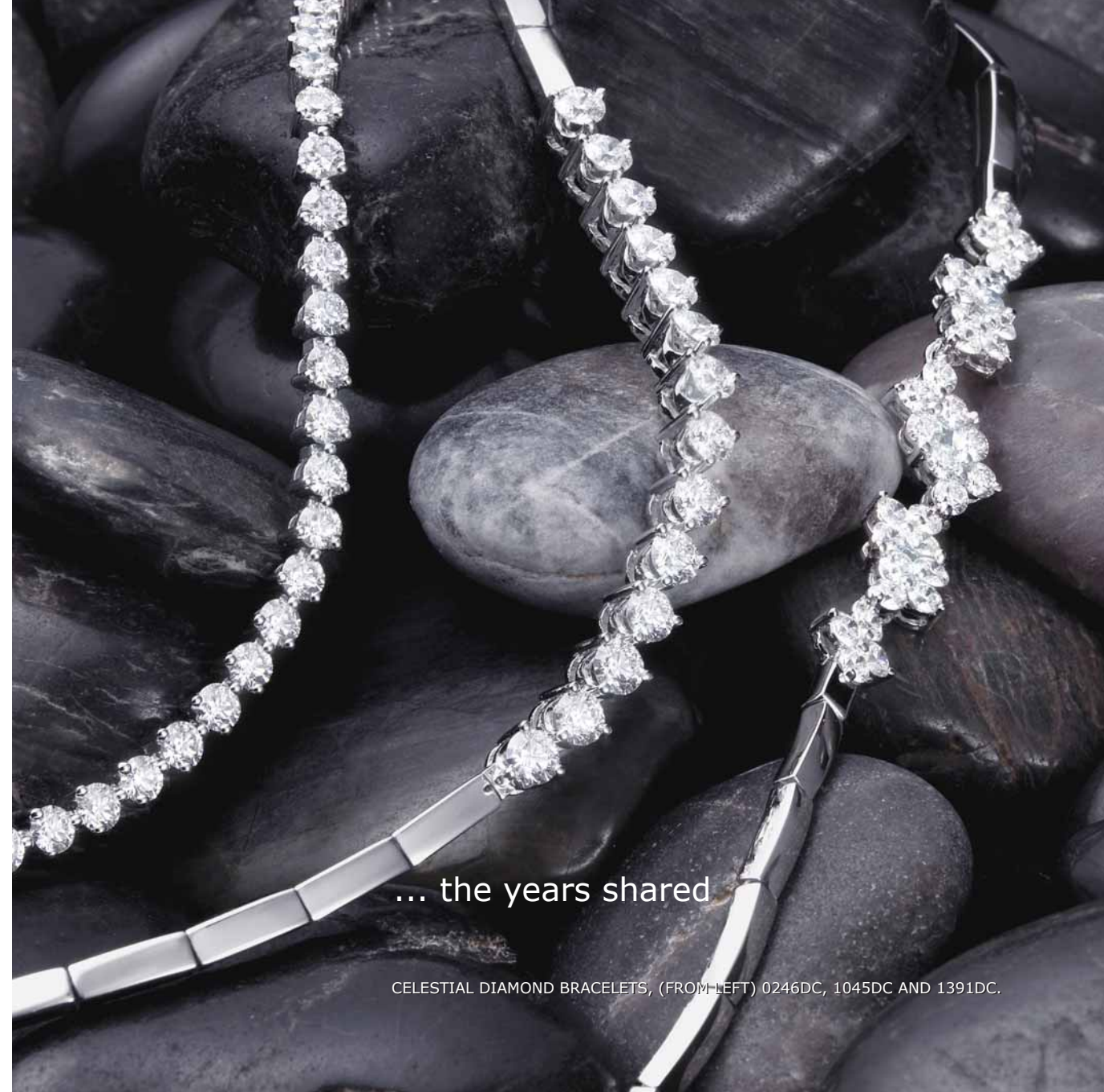
As further testimony to Celestial's exceptional brilliance and quality, we guarantee a 100% trade-in value for your Celestial diamond if you upgrade to a bigger one within two years of purchase.





...The right fit

CELESTIAL DIAMOND RINGS, (FROM TOP) 7399DA, 6583DA, 8051DA, 3050DA, 8052DA AND 8294DA.



... the years shared

CELESTIAL DIAMOND BRACELETS, (FROM LEFT) 0246DC, 1045DC AND 1391DC.



...The ear that listens, hears
and understands

CELESTIAL DIAMOND EARRINGS, (FROM TOP RIGHT) 4296DB, 0816DB AND 3187DB.



...The pillar of strength that supports

CELESTIAL DIAMOND PENDANTS, (FROM LEFT) 7010DD, 7037DD, 7017DD, 7019DD AND 7553DD.

...Perfect matches, made of these



CELESTIAL DIAMOND JEWELLERY SETS, (FROM LEFT) EARRINGS 3978DB, EARRINGS 3977DB, RING 7398DA, RING 6956DA, BRACELET 1392DC AND BRACELET 1391DC.

NECKLACES (FROM LEFT) 1326DF AND 1325DF.



CELESTIAL DIAMOND JEWELLERY SETS, (FROM LEFT) EARRINGS 4296DB, BRACELET 1479DC, NECKLACE 1342DF AND RING 8002DA.



CELESTIAL DIAMOND JEWELLERY SET, EARRINGS 3979DB, RING 7399DA AND NECKLACE 1327DF.

A VOYAGE TO BE SHARED

Designed by Channel NewsAsia presenter Lisa Ang, Voyage Love Bands launches the Celestial Celebrity Series where jewellery is designed by different celebrities. Each piece uses Celestial diamonds to represent the universal and eternal message of romance, love and commitment. With the Voyage Love Bands, a wave pattern around the bands symbolises the highs and lows that the couple have faced together.



CELESTIAL VOYAGE LOVE BANDS, (FROM LEFT) 1809SW AND 1810SW.



THE KEY TO LOVE

Designed by Front host and Nominated Member of Parliament Eunice Olsen, Keys is the second collection in the Celestial Celebrity Series. Inspired by Eunice's love for the piano, the range features black-and-white piano keys using a combination of sleek white gold, elegant black onyx and Celestial diamonds.

CELESTIAL KEYS RING 1498WA, EARRINGS 0853WB AND PENDANT 2080WD.

...To have, to hold,...without end



CELESTIAL DIAMOND WEDDING RINGS, (FROM LEFT) 0884SW, 1300SW, 1264SW AND 1296SW.



(FROM LEFT) 0804SW, 1298SW, 1290SW, AND 1302SW.